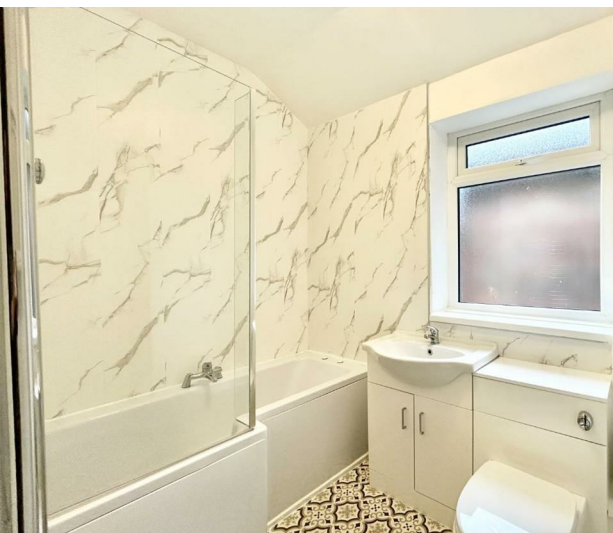




Flat 2, 3 New Burlington Road, Bridlington, YO15 3HT

£600 PCM



Flat 2, 3 New Burlington Road, Bridlington, YO15 3HT

£600 PCM



Front Exterior

A concrete walkway leading up to the property with a gated front exterior.

Lounge

Located at the front of the property, the lounge overlooks New Burlington Road and is a great size.

Kitchen

Located at the rear of the property, the kitchen has an integrated oven and electric hobs with multiple wall and base units.

Bathroom

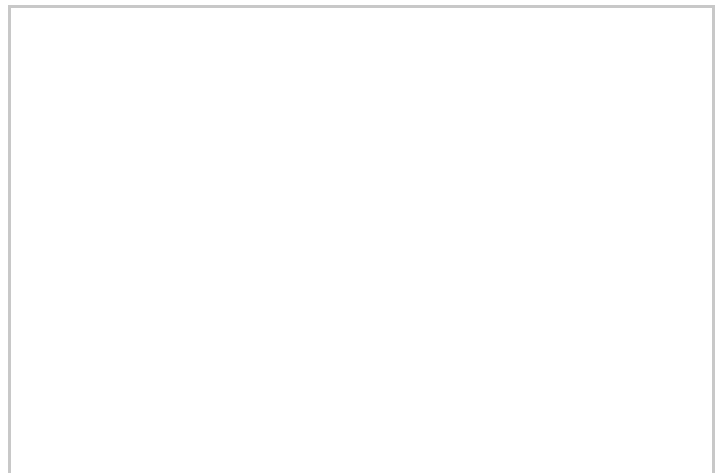
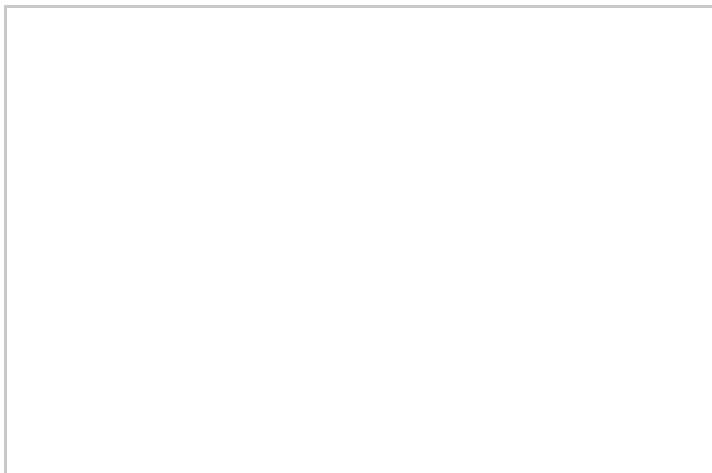
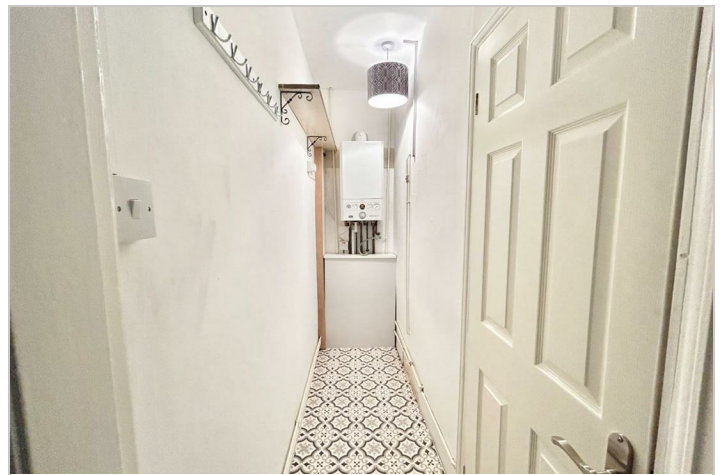
Located at the rear of the property, the bathroom has a shower over bath, wc and wash basin.

Bedroom 1

Located at the front of the property, bedroom 1 is a double spacious bedroom.

Bedroom 2

Located at the rear of the property, bedroom 2 is a single/small double.



Road Map



Hybrid Map



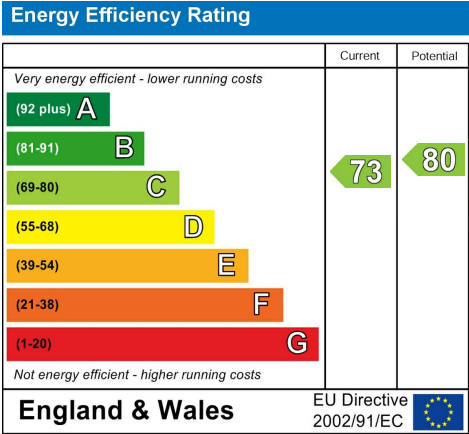
Terrain Map



Floor Plan



Energy Efficiency Graph



Viewing

In order to be eligible for a viewing please follow the steps below:

- 1. Navigate to our website - www.thepropertyshopyorkshire.co.uk
- 2. Find 'Tenants' and select the 'REGISTER YOUR INTEREST' tab
- 3. Fill out the form providing as much information as possible
- 4. We will assess your form and if you are a match for this property, we will be in contact to arrange a viewing

Alternatively, If you need help on the above, please contact our Head Office - Bridlington Office on 01262 228283 for further information.